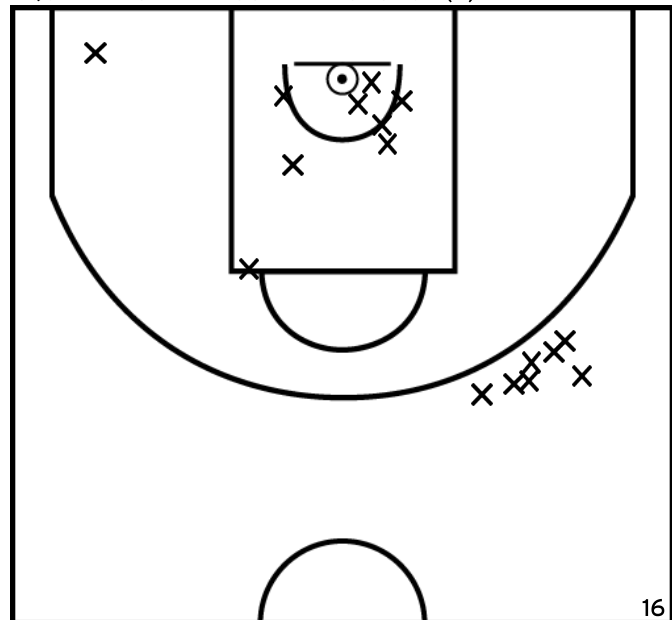


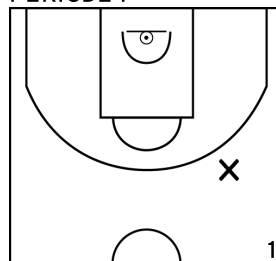
Rencontre: 8532 Date: 01/02/26 Heure: 14:00

Arbitre: Roy J BOUQUETY L

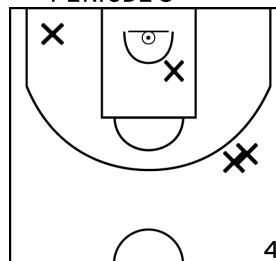
## ÉQUIPE BASKET BASSIN D'ARCACHON (A)



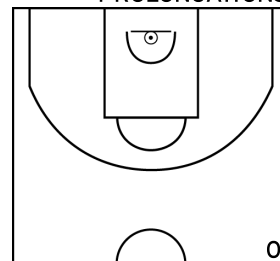
## PÉRIODE 1



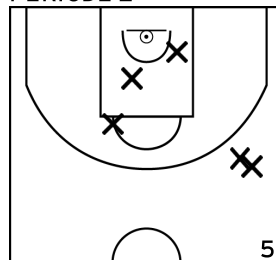
## PÉRIODE 3



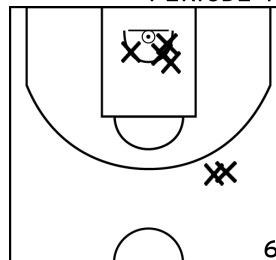
## PROLONGATIONS



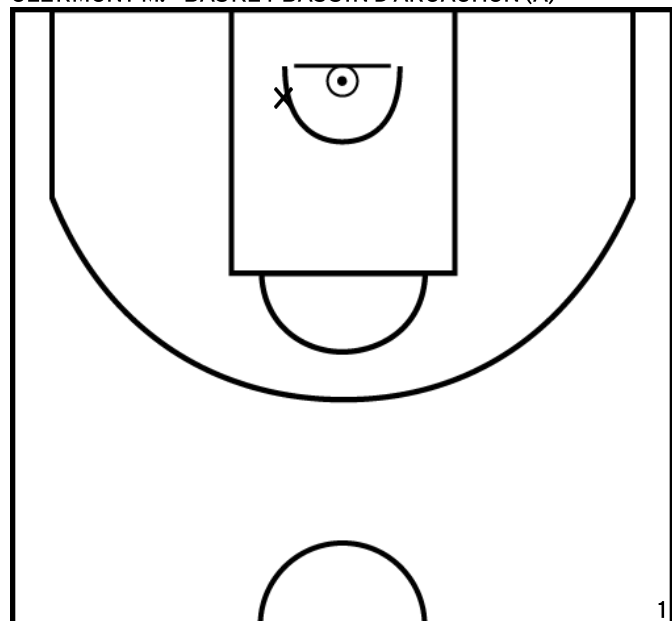
## PÉRIODE 2



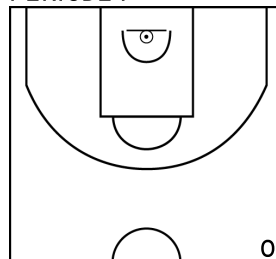
## PÉRIODE 4



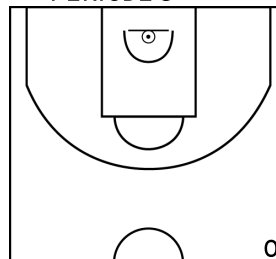
## CLERMONT M. - BASKET BASSIN D'ARCACHON (A)



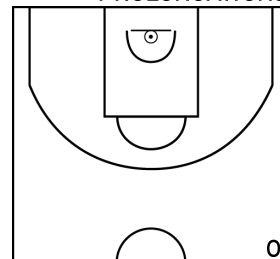
## PÉRIODE 1



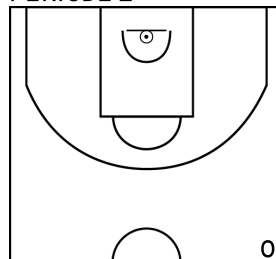
## PÉRIODE 3



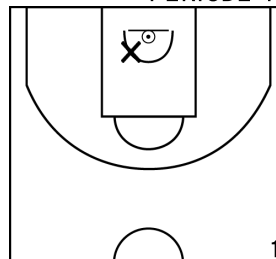
## PROLONGATIONS



## PÉRIODE 2



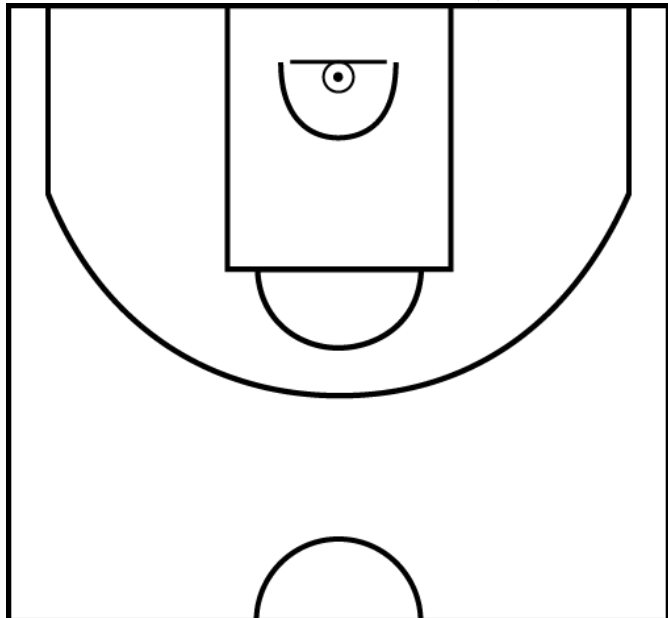
## PÉRIODE 4



Rencontre: 8532 Date: 01/02/26 Heure: 14:00

Arbitre: Roy J BOUQUETY L

LABBE M. - BASKET BASSIN D'ARCACHON (A)



PÉRIODE 1



PÉRIODE 3



PROLONGATIONS



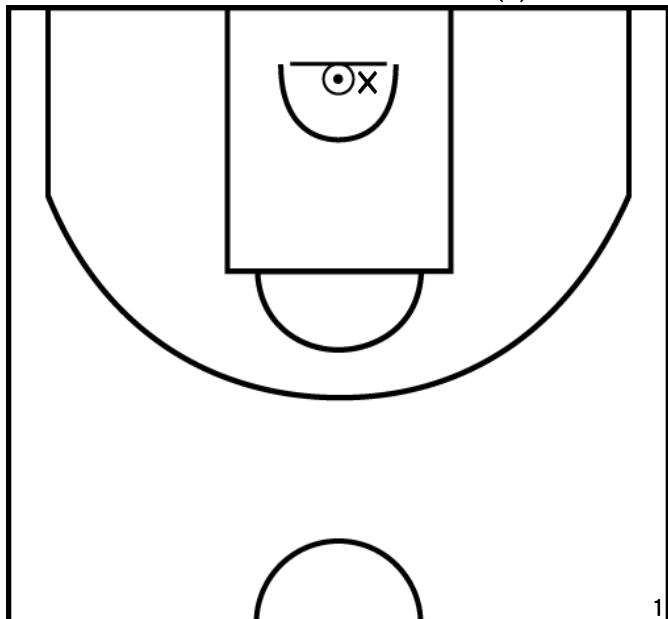
PÉRIODE 2



PÉRIODE 4



CAZALET L. - BASKET BASSIN D'ARCACHON (A)



PÉRIODE 1



PÉRIODE 3



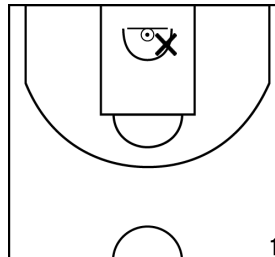
PROLONGATIONS



PÉRIODE 2



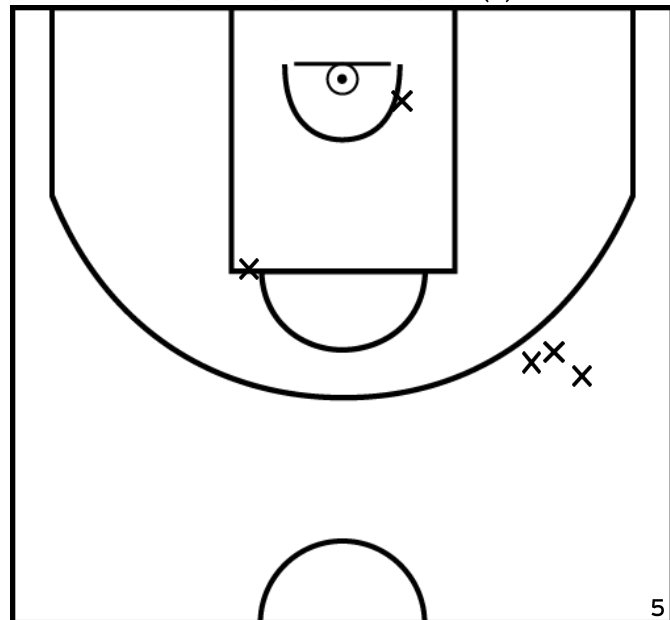
PÉRIODE 4



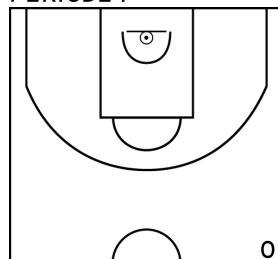
Rencontre: 8532 Date: 01/02/26 Heure: 14:00

Arbitre: Roy J BOUQUETY L

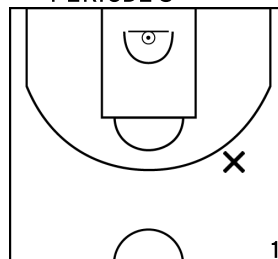
CHIRON L. - BASKET BASSIN D'ARCACHON (A)



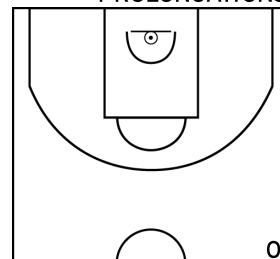
PÉRIODE 1



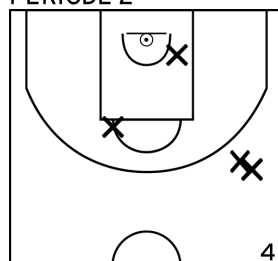
PÉRIODE 3



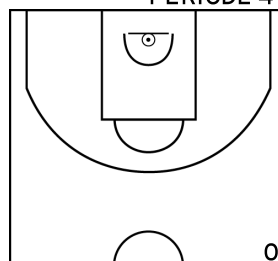
PROLONGATIONS



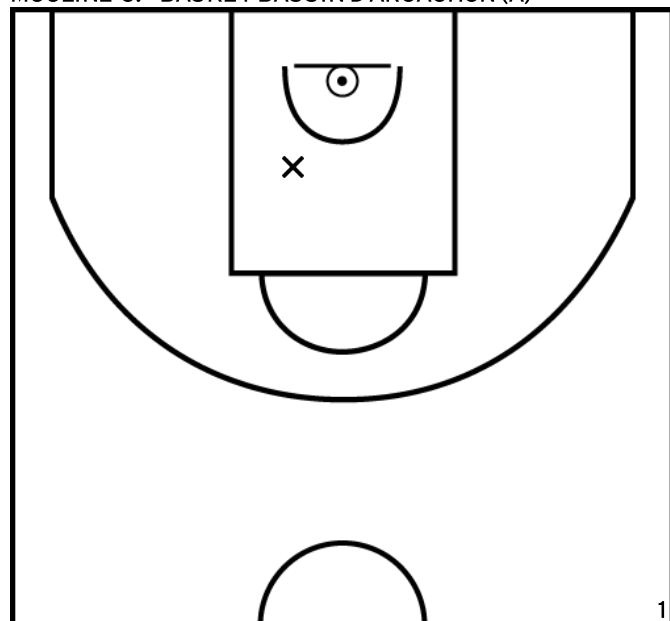
PÉRIODE 2



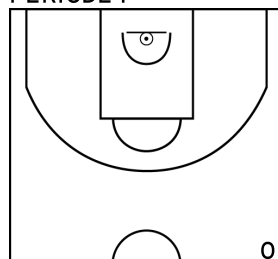
PÉRIODE 4



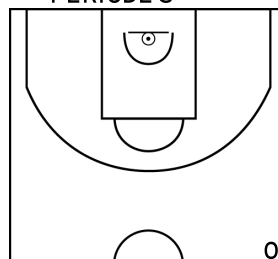
MOULINE C. - BASKET BASSIN D'ARCACHON (A)



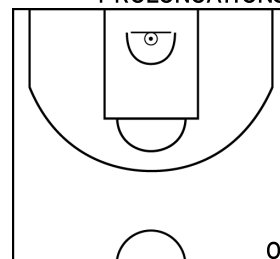
PÉRIODE 1



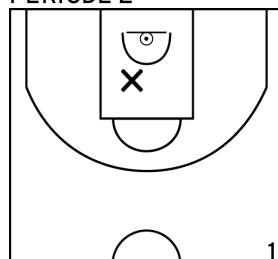
PÉRIODE 3



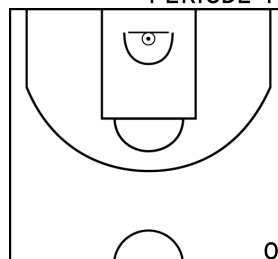
PROLONGATIONS



PÉRIODE 2



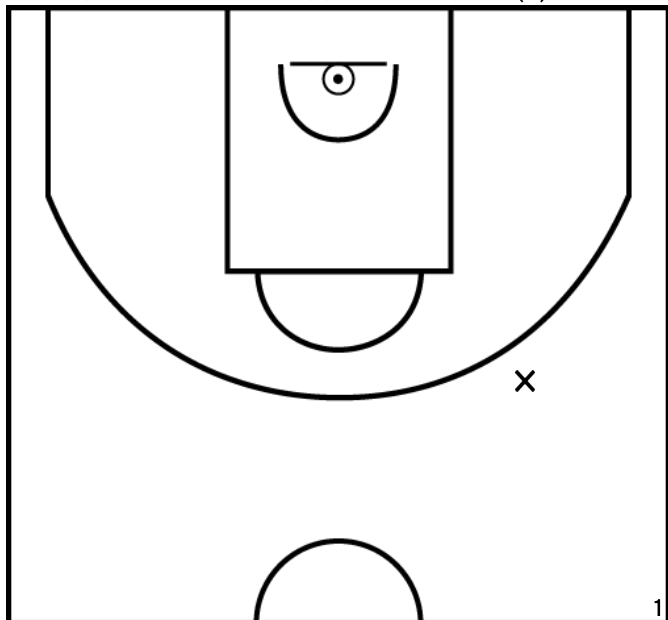
PÉRIODE 4



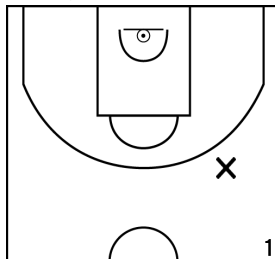
Rencontre: 8532 Date: 01/02/26 Heure: 14:00

Arbitre: Roy J BOUQUETY L

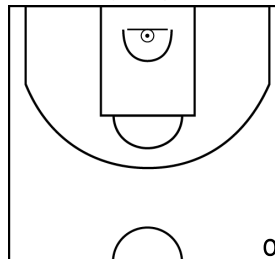
RAFFESTIN J. - BASKET BASSIN D'ARCACHON (A)



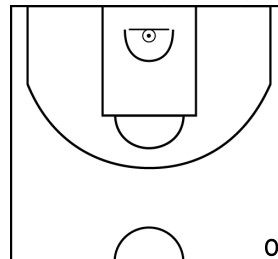
PÉRIODE 1



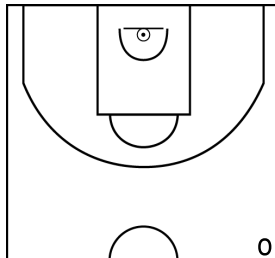
PÉRIODE 3



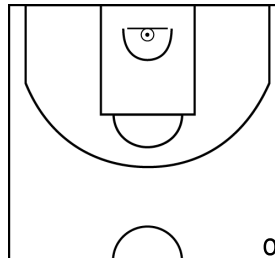
PROLONGATIONS



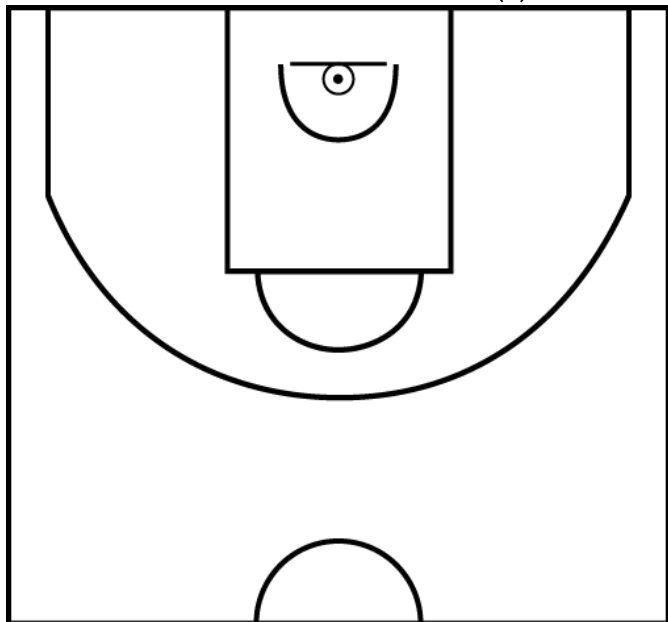
PÉRIODE 2



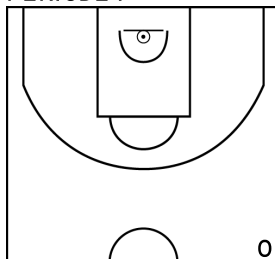
PÉRIODE 4



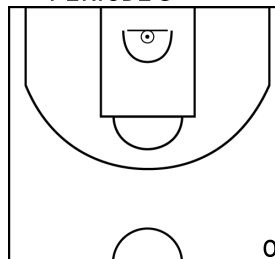
GIMBERT A. - BASKET BASSIN D'ARCACHON (A)



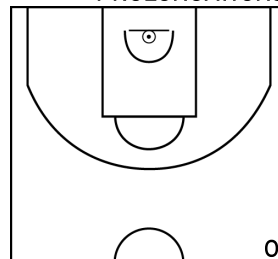
PÉRIODE 1



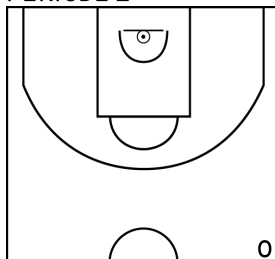
PÉRIODE 3



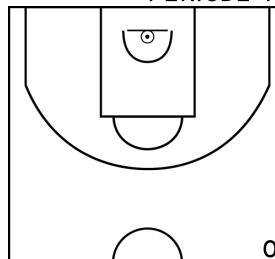
PROLONGATIONS



PÉRIODE 2



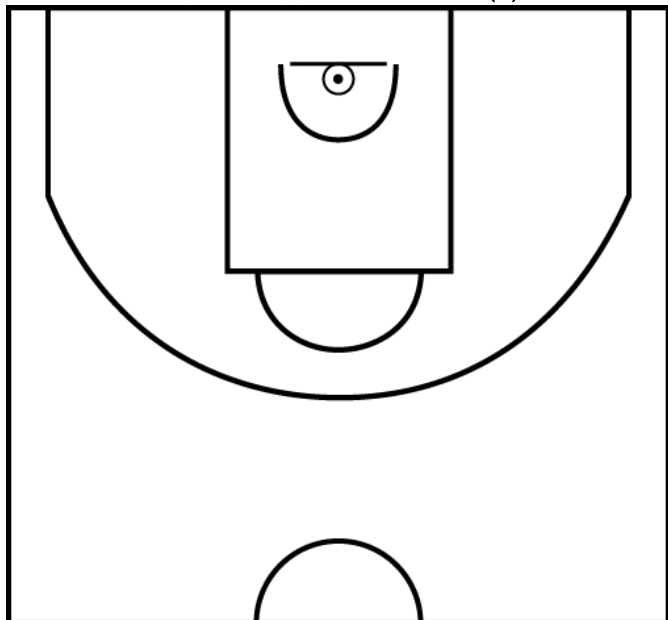
PÉRIODE 4



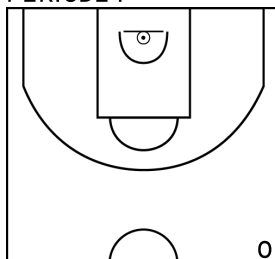
Rencontre: 8532 Date: 01/02/26 Heure: 14:00

Arbitre: Roy J BOUQUETY L

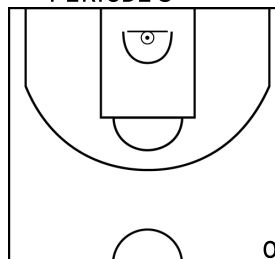
ZAGHET M. - BASKET BASSIN D'ARCACHON (A)



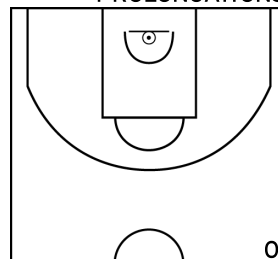
PÉRIODE 1



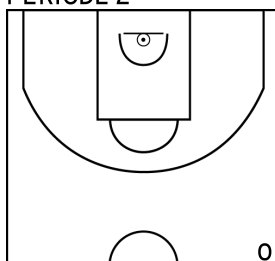
PÉRIODE 3



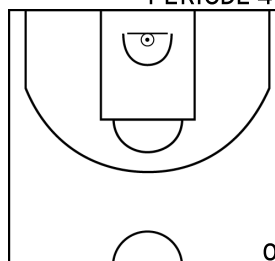
PROLONGATIONS



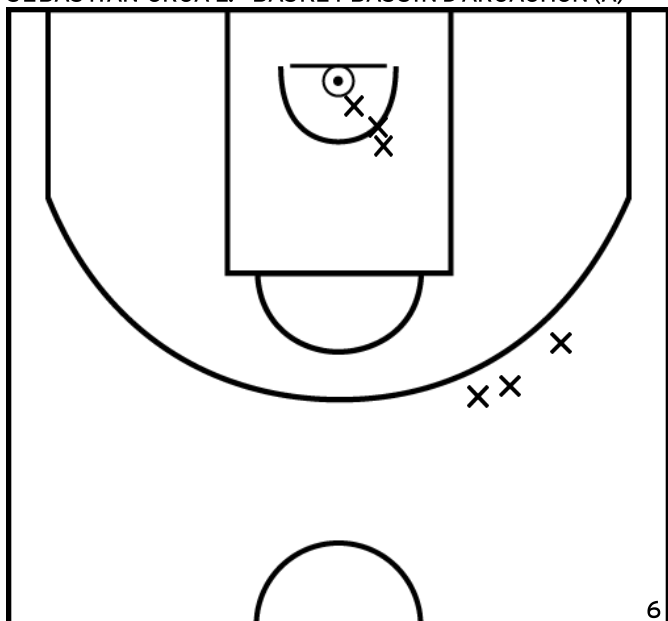
PÉRIODE 2



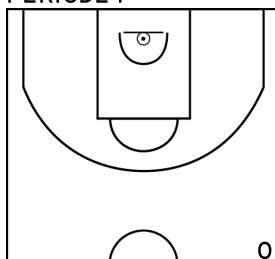
PÉRIODE 4



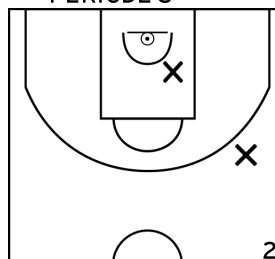
SEBASTIAN-ORGA L. - BASKET BASSIN D'ARCACHON (A)



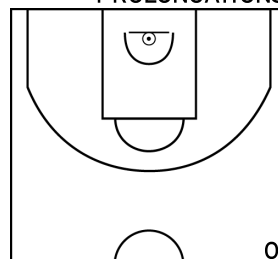
PÉRIODE 1



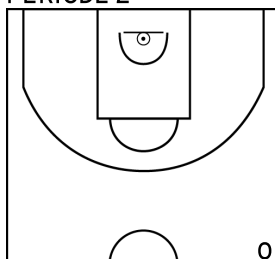
PÉRIODE 3



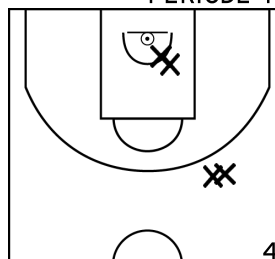
PROLONGATIONS



PÉRIODE 2



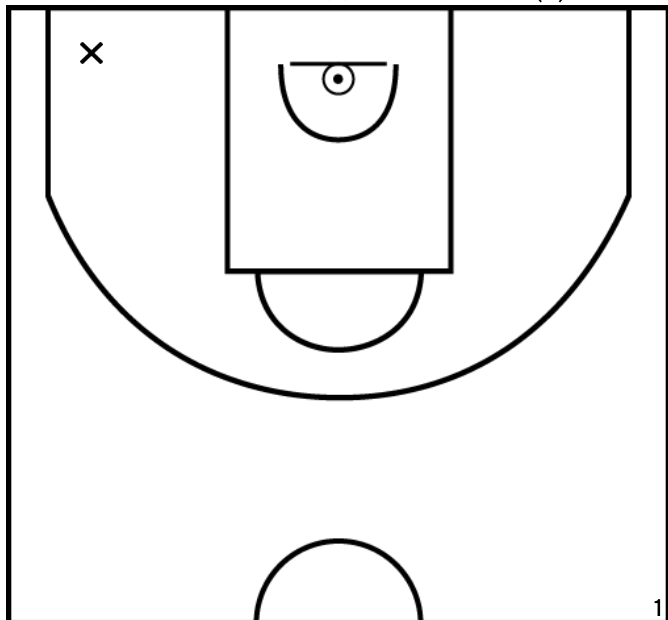
PÉRIODE 4



Rencontre: 8532 Date: 01/02/26 Heure: 14:00

Arbitre: Roy J BOUQUETY L

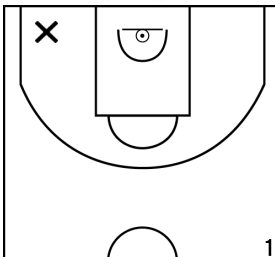
HAUTCOEUR M. - BASKET BASSIN D'ARCACHON (A)



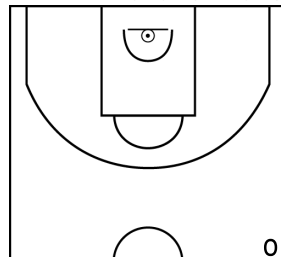
PÉRIODE 1



PÉRIODE 3



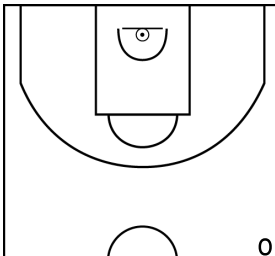
PROLONGATIONS



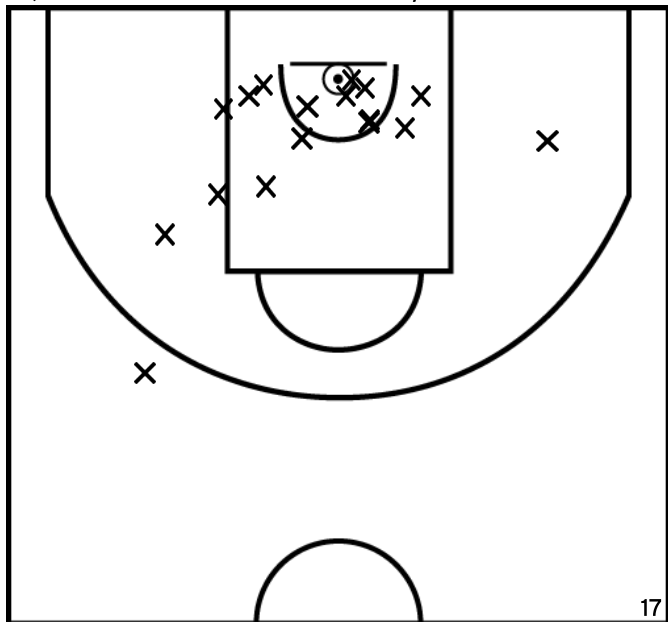
PÉRIODE 2



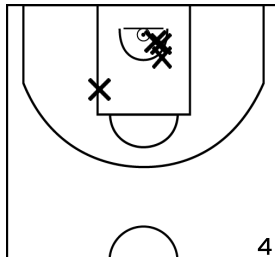
PÉRIODE 4



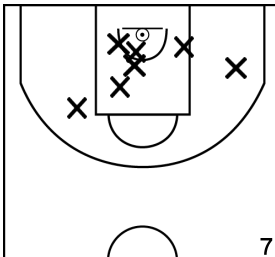
ÉQUIPE Entente UNION SAINT JEAN / GINKO AUBIERS NGB (B)



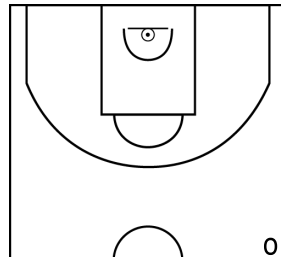
PÉRIODE 1



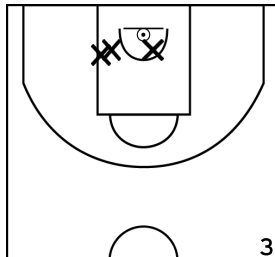
PÉRIODE 3



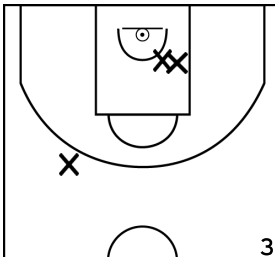
PROLONGATIONS



PÉRIODE 2



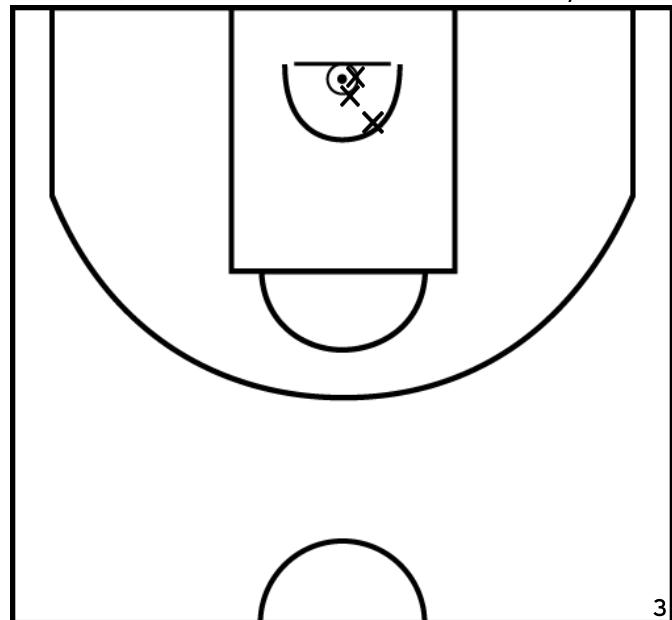
PÉRIODE 4



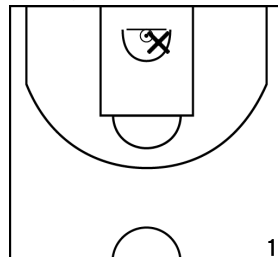
Rencontre: 8532 Date: 01/02/26 Heure: 14:00

Arbitre: Roy J BOUQUETY L

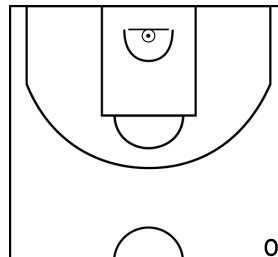
N'GARMOSSERO G. - ENTENTE UNION SAINT JEAN / GINKO AUBIERS NGB (B)



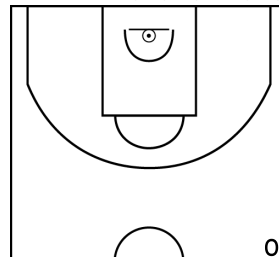
PÉRIODE 1



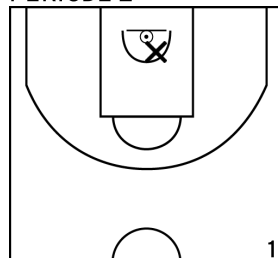
PÉRIODE 3



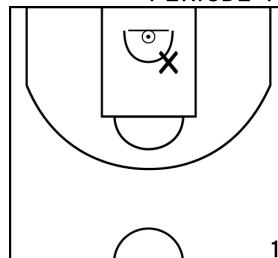
PROLONGATIONS



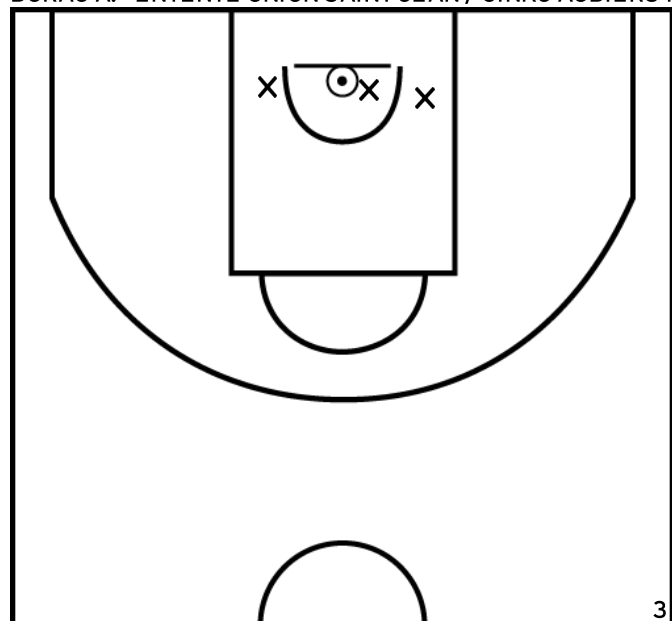
PÉRIODE 2



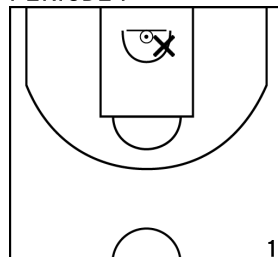
PÉRIODE 4



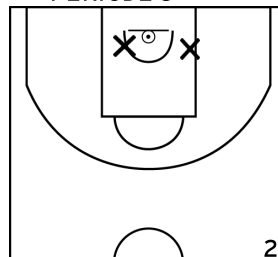
BURAC A. - ENTENTE UNION SAINT JEAN / GINKO AUBIERS NGB (B)



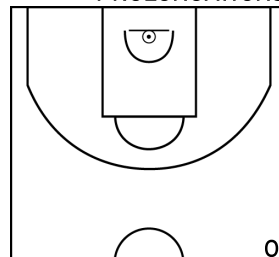
PÉRIODE 1



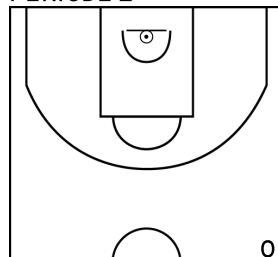
PÉRIODE 3



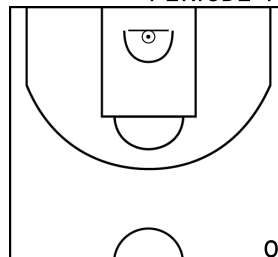
PROLONGATIONS



PÉRIODE 2



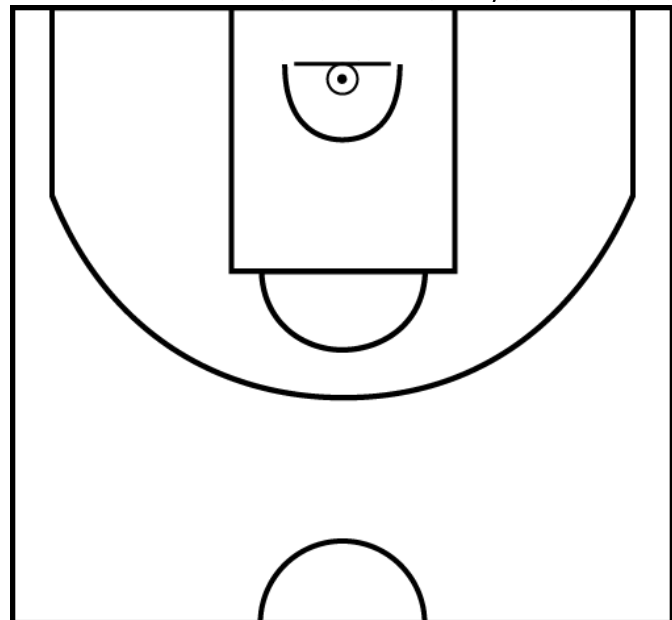
PÉRIODE 4



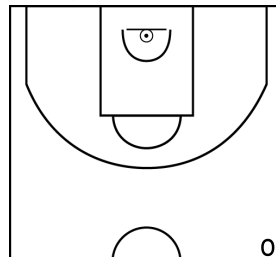
Rencontre: 8532 Date: 01/02/26 Heure: 14:00

Arbitre: Roy J BOUQUETY L

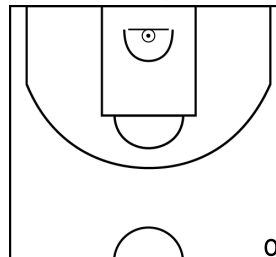
PINVILLE A. - ENTENTE UNION SAINT JEAN / GINKO AUBIERS NGB (B)



PÉRIODE 1



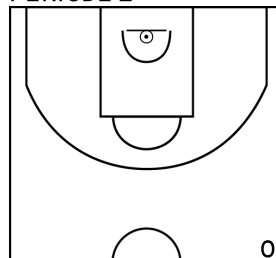
PÉRIODE 3



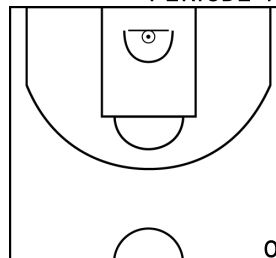
PROLONGATIONS



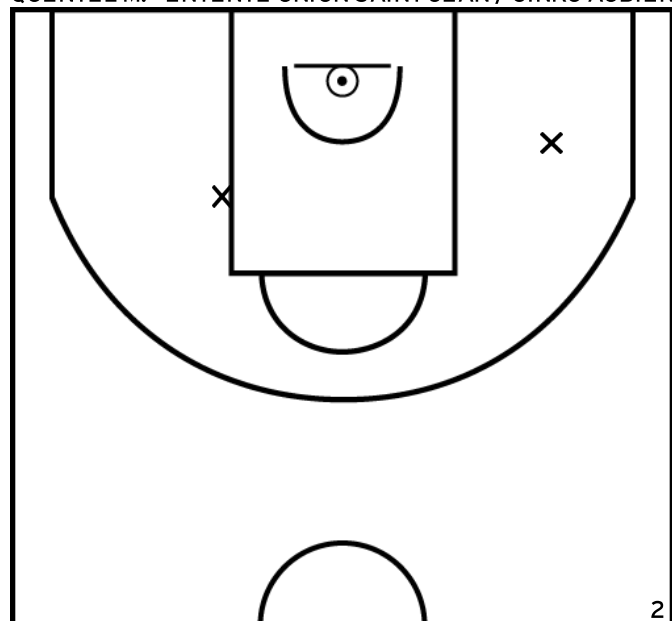
PÉRIODE 2



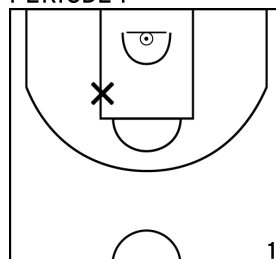
PÉRIODE 4



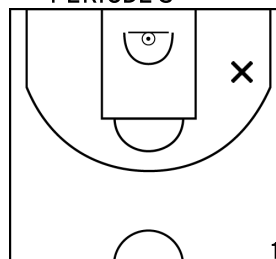
QUENTEL M. - ENTENTE UNION SAINT JEAN / GINKO AUBIERS NGB (B)



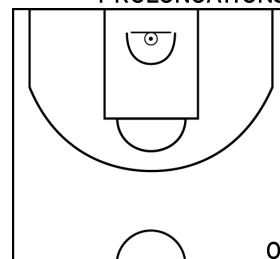
PÉRIODE 1



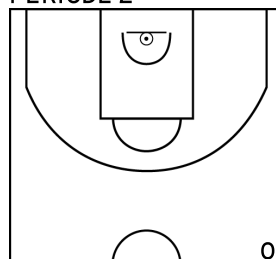
PÉRIODE 3



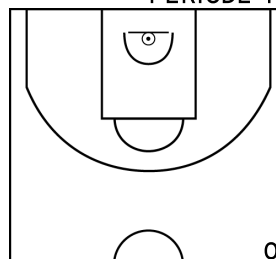
PROLONGATIONS



PÉRIODE 2



PÉRIODE 4

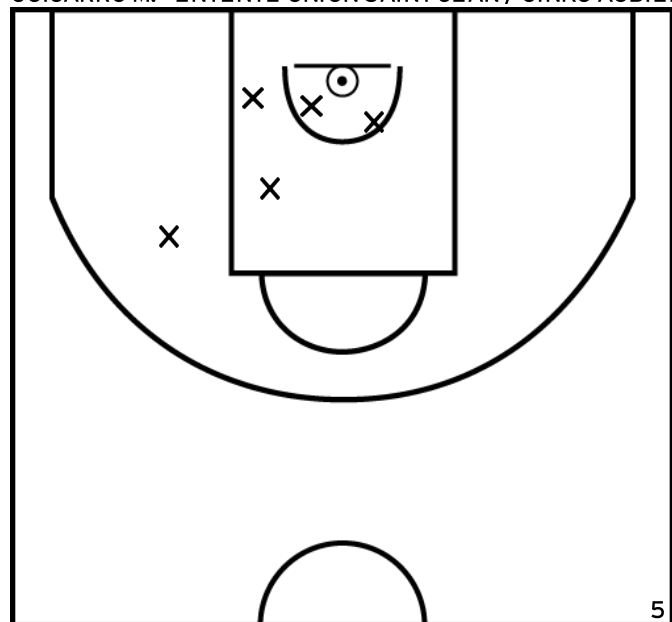




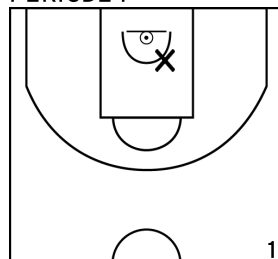
Rencontre: 8532 Date: 01/02/26 Heure: 14:00

Arbitre: Roy J BOUQUETY L

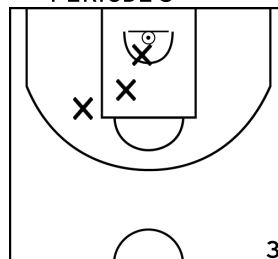
GUIJARRO M. - ENTENTE UNION SAINT JEAN / GINKO AUBIERS NGB (B)



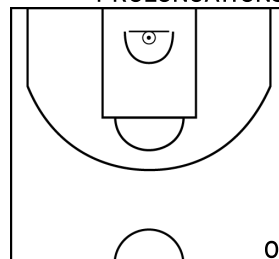
PÉRIODE 1



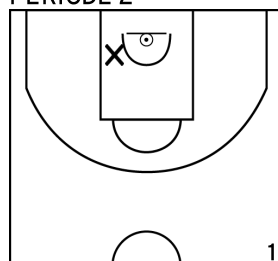
PÉRIODE 3



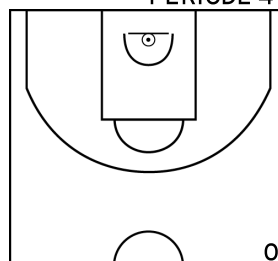
PROLONGATIONS



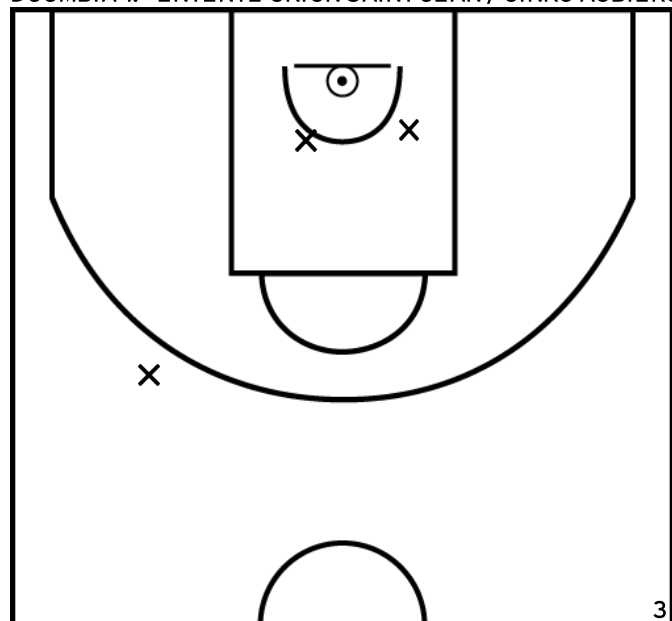
PÉRIODE 2



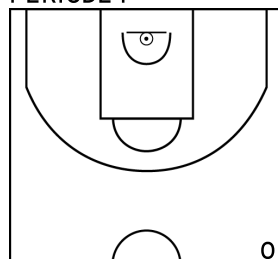
PÉRIODE 4



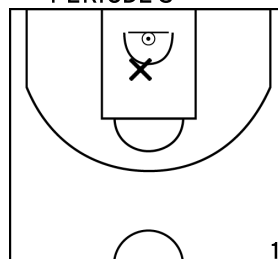
DOUMBIA T. - ENTENTE UNION SAINT JEAN / GINKO AUBIERS NGB (B)



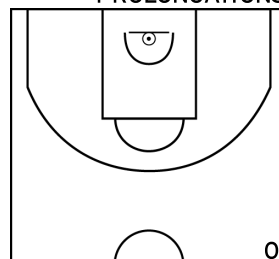
PÉRIODE 1



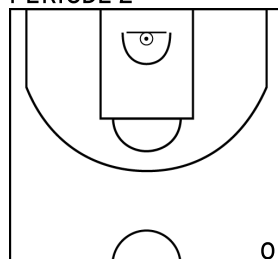
PÉRIODE 3



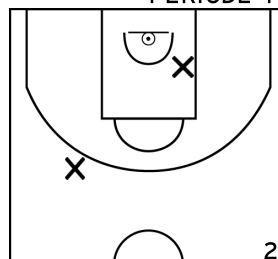
PROLONGATIONS



PÉRIODE 2

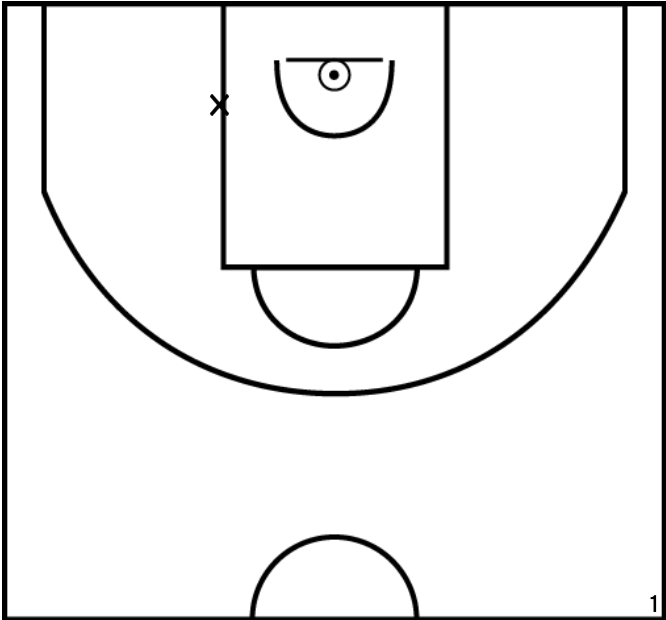


PÉRIODE 4

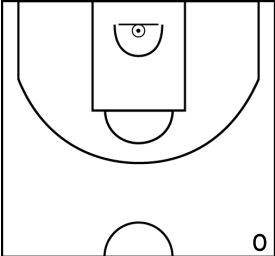


Rencontre: 8532    Date: 01/02/26    Heure: 14:00  
Arbitre: Roy J BOUQUETY L

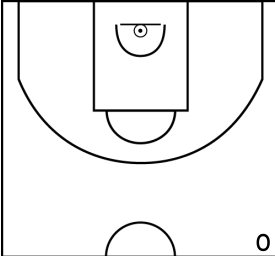
HANCE-MAZURIE A. - ENTENTE UNION SAINT JEAN / GINKO AUBIERS NGB (B)



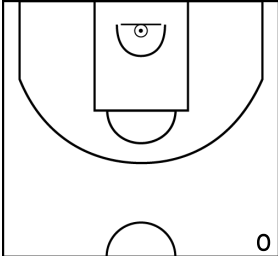
PÉRIODE 1



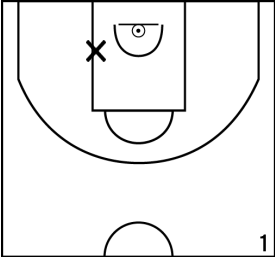
PÉRIODE 3



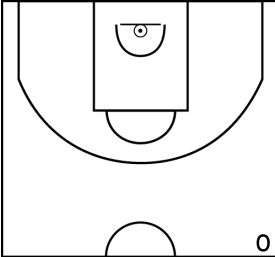
PROLONGATIONS



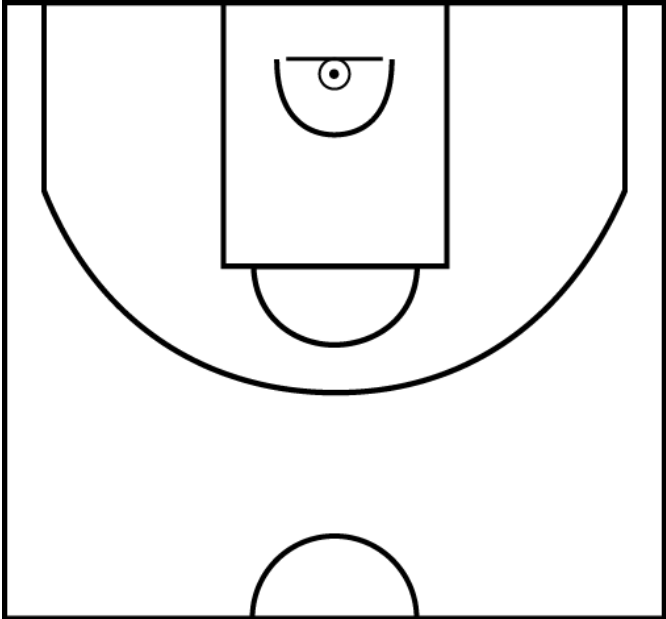
PÉRIODE 2



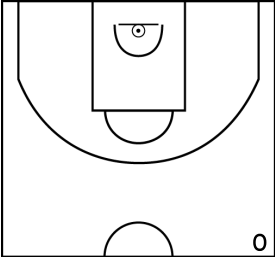
PÉRIODE 4



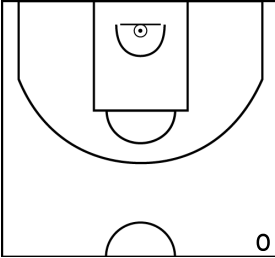
SEGURA V. - ENTENTE UNION SAINT JEAN / GINKO AUBIERS NGB (B)



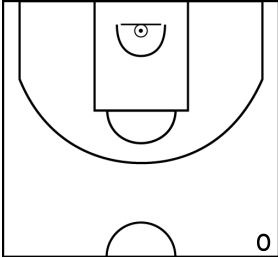
PÉRIODE 1



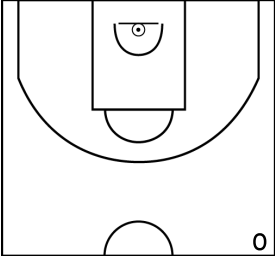
PÉRIODE 3



PROLONGATIONS



PÉRIODE 2



PÉRIODE 4

